

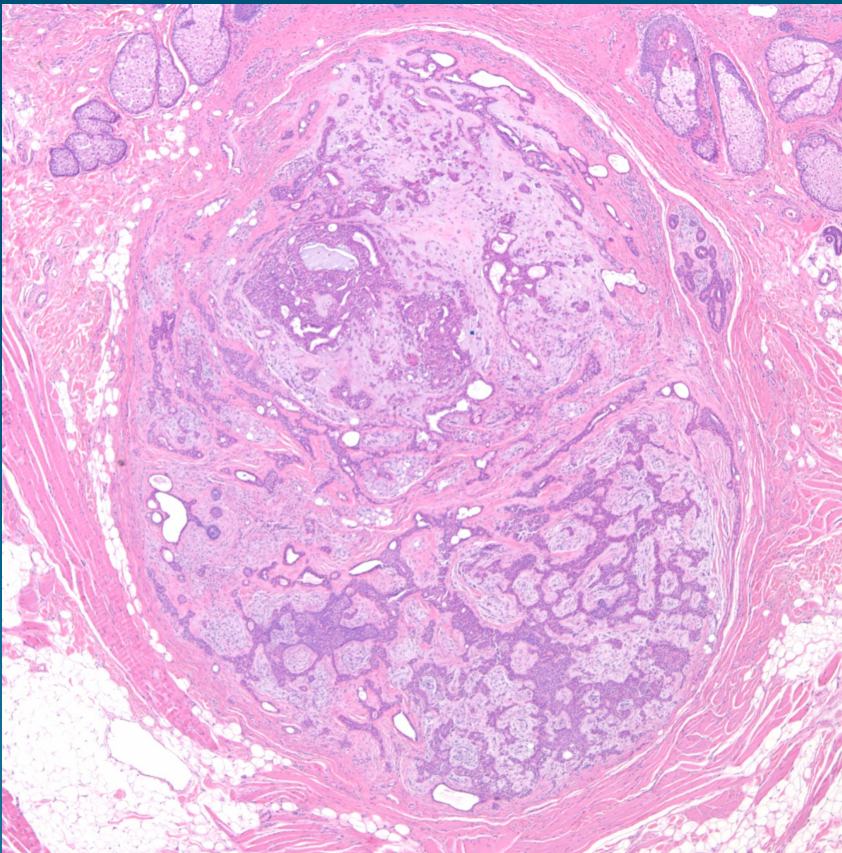
What is the best diagnosis?

- A. Chondroid syringoma
- B. Eccrine spiradenoma
- C. Apocrine cystadenoma
- D. Nodular and cystic hidradenoma
- E. Accessory breast tissue

Chondroid Syringoma

(Benign cutaneous mixed tumor)

Pearls



- Circumscribed dermal tumor with no epidermal attachment
- Varying solid and cystic components lined by squamous, apocrine, and eccrine epithelial cells
- Chondroid myxoid background of bluish hue